

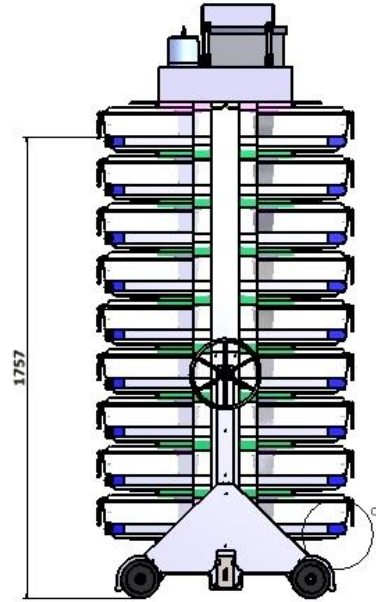
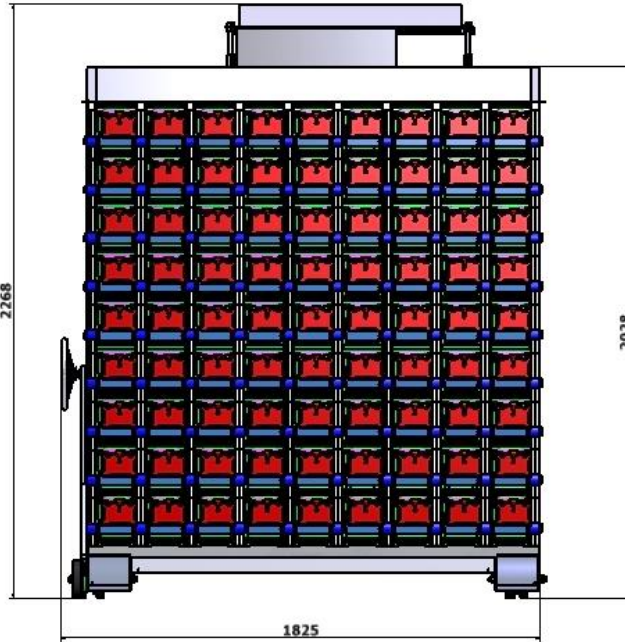
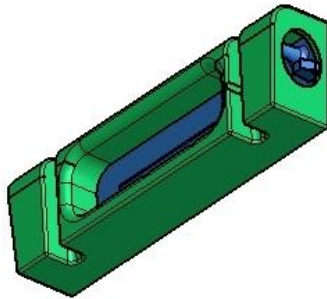
B (1:1)



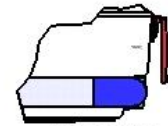
Cage showing front adaptor which fits to a standard cage



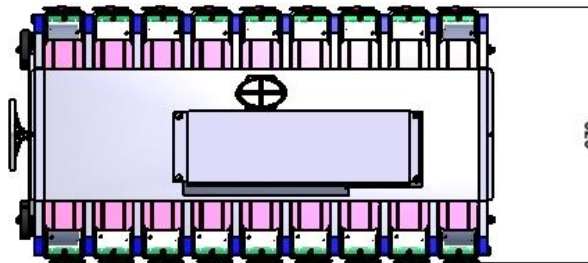
Front adaptor assembly



C (5)



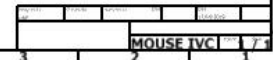
Air extractor detail

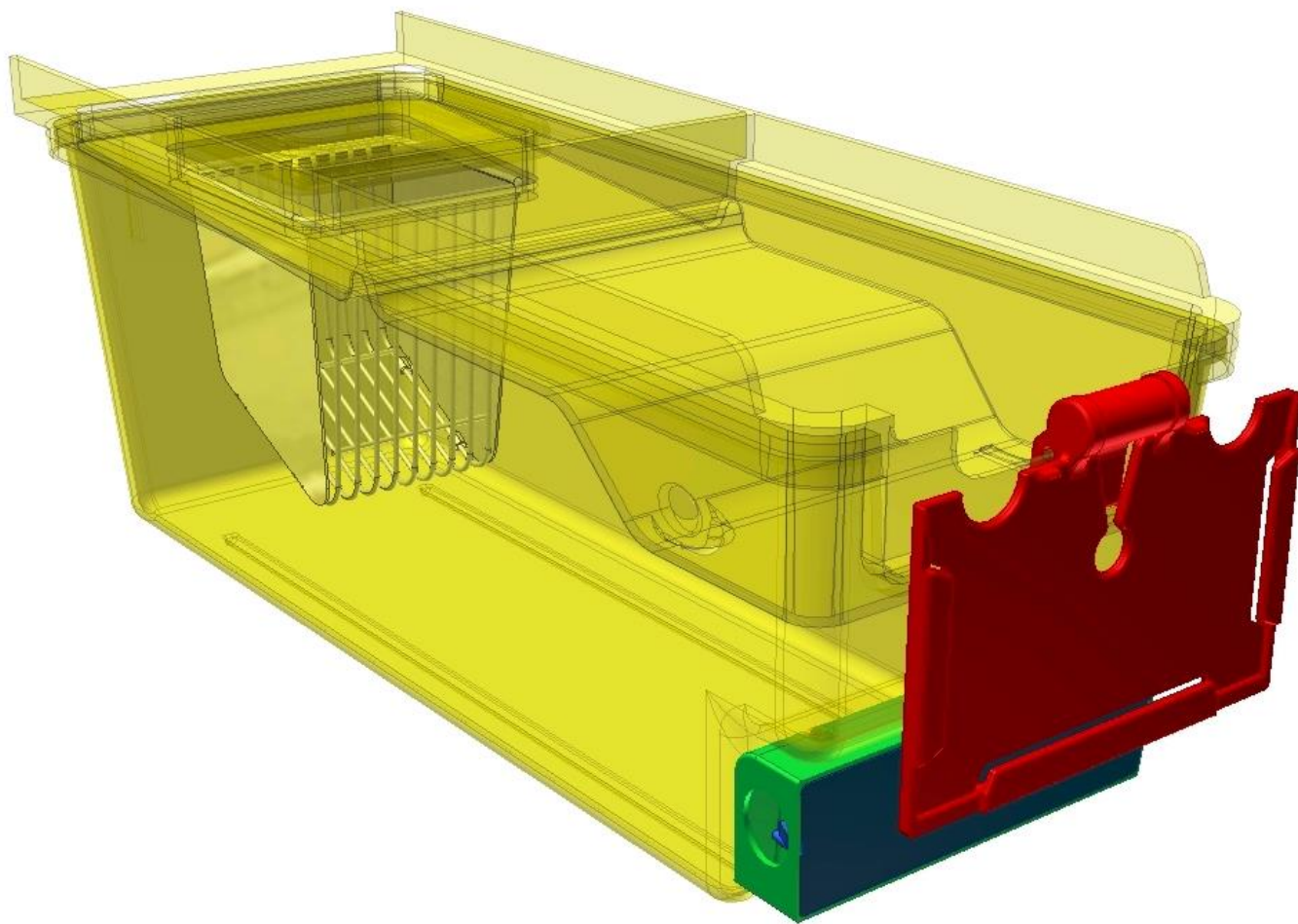


Airlaw

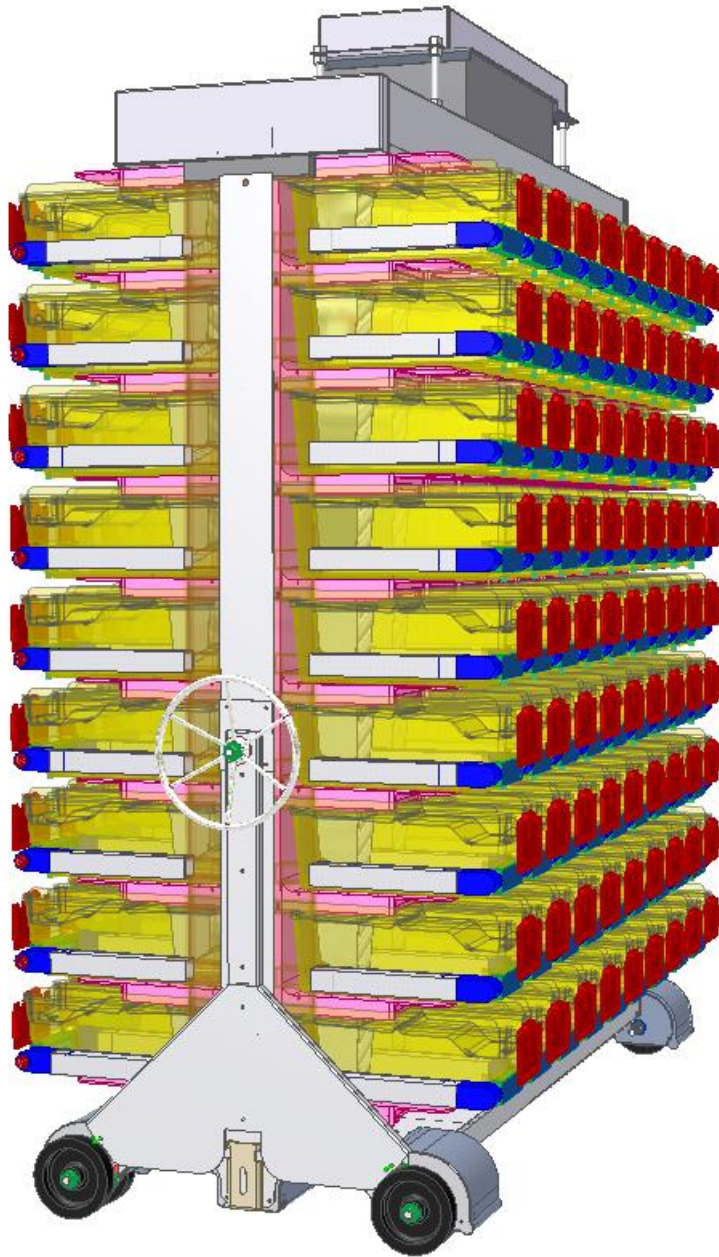
This rack runs in cage positive pressure mode with air in at the top of the cage and air extracted at the bottom front.

With this method the airflow closely follows good air conditioning practices and reduces significantly the cage pressure and circulating air velocity. There is no leakage to the room.





The Airlaw rack with air handler provide true HEPA filtered air to each cage in the rack via a special coupling. This coupling is fitted to a standard cage as required.



The Airlaw cage in our new rack is unique in the way it operates.

Most cages have air flowing into and out of the cage through small tubes/ports usually 6 to 7 mm diameter. Small tubes/ports can easily block with cage detritus **and they do**. The large ports in the Airlaw cage can't be blocked. Small ports require higher pressure for the same air-flow as a larger port. Higher pressure in the cage means a higher risk of leakage of air from the cage. Airlaw cages work typically between -2.5 pascals and +2.5 pascals. The HEPA filter is a standard item and can be replaced in about 15 minutes with a 1 to 2 year life expectancy.

Gauges and controls are not shown. Noise and vibration is extremely low with the use of a high precision axial fan. **No expensive lock-in cleaning contracts**